



Austria
 Ammeraal Beltech GmbH Austria
 tel: +43 2244 29581
 fax: +43 2244 2958199
 e-mail: info@ammeraalbeltech.at

Belgium
 Ammeraal Beltech N.V.
 tel: +32 2466 0300
 fax: +32 2466 4272
 e-mail: salesgb@ammeraal-beltech.be

Canada
 Ammeraal Beltech Modular, Inc.
 tel: +1 610 372 1800
 fax: +1 610 372 3590
 e-mail: info@unichains.com

Chile
 Ammeraal Beltech Chile S.A.
 tel: +56 2331 2900
 fax: +56 2331 2912
 e-mail: enriqueparada@ammeraalbeltech.cl

China
 AA Industrial Belting (Shanghai) Co. Ltd.
 tel: +86 21 6534 4690
 fax: +86 21 6548 0430
 e-mail: webmaster@ammeraalbeltech.com.cn

Czech Republic
 Ammeraal Beltech s.r.o.
 tel: +420 567 563 631
 fax: +420 567 330 637
 e-mail: prode@ammeraalbeltech.cz

Denmark
 Ammeraal Beltech Modular A/S
 tel: +45 7572 3100
 fax: +45 7572 3348
 e-mail: salesnordic@unichains.dk

Finland
 Ammeraal Beltech Oy
 tel: +358 207 911 400
 fax: +358 207 911 450
 e-mail: info@ammeraalbeltech.fi

France
 Ammeraal Beltech S.A.S.
 tel: +33 3 2090 4313
 fax: +33 3 2090 6011
 e-mail: unichains@ammeraalbeltech.fr

Germany
 Ammeraal Beltech Modular GmbH
 tel: +49 5971 91437 0
 fax: +49 5971 91547 5
 e-mail: admin@unichains.de

Hungary
 Ammeraal Beltech Lőrincz Ltd.
 tel: +36 2342 7510
 fax: +36 2342 7511
 e-mail: info@ammeraalbeltech.hu

Ireland
 Ammeraal Beltech Ireland
 tel: +44 121 559 0377
 fax: +44 121 559 0373
 e-mail: admin@unichains.co.uk

Italy
 uni-chains italia s.r.l.
 tel: +39 0522 922470
 fax: +39 0522 922508
 e-mail: unichains@unichains.it

Japan
 Ammeraal Beltech K.K.
 tel: +81 52 209 2977
 fax: +81 52 231 1102
 e-mail: s-sakai@ammeraalbeltech.jp

Luxembourg
 Ammeraal Beltech S.a.r.l.
 tel: +352 2648 3856
 fax: +352 2648 3857
 e-mail: sales@ammeraal-beltech.lu

Malaysia
 Ammeraal Beltech Sdn. Bhd.
 tel: +60 3 8061 8849
 fax: +60 3 8061 8935
 e-mail: sales.kl@ammeraalbeltech.com.my

Netherlands
 Ammeraal Beltech B.V.
 tel: +31 72 575 1212
 fax: +31 72 574 3364
 e-mail: info@ammeraalbeltech.nl

Norway
 Ammeraal Beltech Modular NO
 tel: +47 2220 2699
 fax: +45 7572 3348
 e-mail: salesnordic@unichains.com

Portugal
 Ammeraal Beltech S.A.
 tel: +351 22 947 9440
 fax: +351 22 941 3081
 e-mail: geral@ammeraalbeltech.pt

Russia
 O.O.O. Ammeraal
 tel: +07 495 234 2357
 fax: +07 495 234 8803
 e-mail: ammeraal@mtu-net.ru

Singapore
 Ammeraal Beltech Pte Ltd.
 tel: +65 6273 9767
 fax: +65 6273 5490
 e-mail: sales@ammeraalbeltech.com.sg

Slovakia
 Ammeraal Beltech s.r.o.
 tel: +421 2 5564 8541
 fax: +421 2 5564 8543
 e-mail: predaj@ammeraalbeltech.sk

South Korea
 Ammeraal Beltech Co. Ltd.
 tel: +82 31 448 3613 7
 fax: +82 31 448 3618
 e-mail: amel@ammeraalbeltech.co.kr

Spain
 Ammeraal Beltech S.A.
 tel: +34 961 2186 38
 fax: +34 961 2186 39
 e-mail: cem@ammeraalbeltech.es

Sweden
 Ammeraal Beltech AB
 tel: +46 44 43015
 fax: +46 44 43349
 e-mail: info@ammeraal-beltech.se

Switzerland
 Ammeraal Beltech AG
 tel: +41 55 2253 535
 fax: +41 55 2253 636
 e-mail: info@ammeraal-beltech.ch

Thailand
 Ammeraal Beltech Co. Ltd.
 tel: +66 2902 2604
 fax: +66 2902 0422
 e-mail: sales@ammeraalbeltech.th.com

Ukraine
 ABSC Ukraine Ltd.
 tel: +380 563 723211
 fax: +380 563 713100
 e-mail: ammeraal@ukr.net

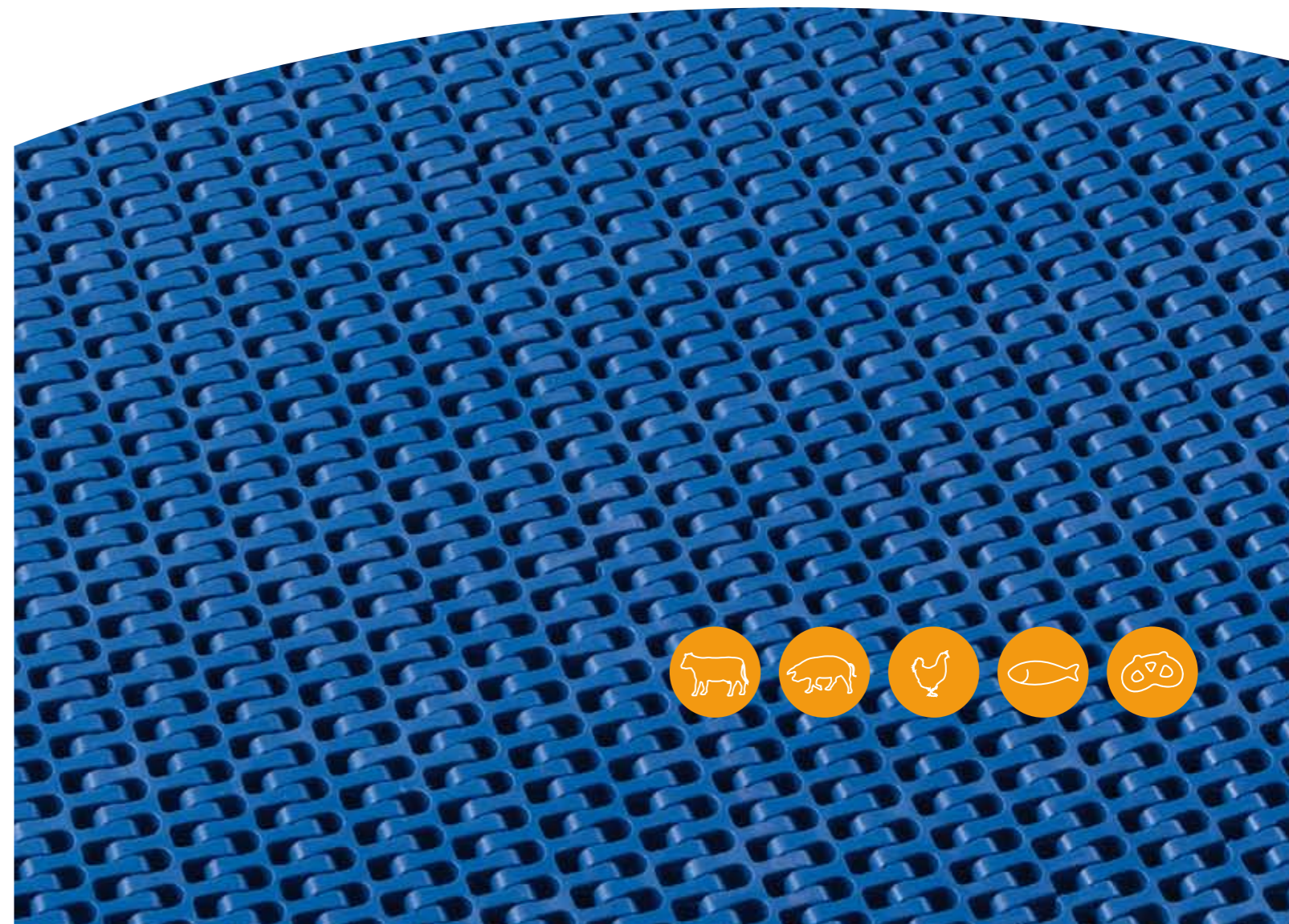
United Kingdom
 Ammeraal Beltech UK
 tel: +44 121 559 0377
 fax: +44 121 559 0373
 e-mail: modular@ammeraalbeltech.co.uk

United States
 Ammeraal Beltech Modular, Inc.
 tel: +01 610 372 1800
 fax: +01 610 372 3590
 e-mail: sales@unichains.com

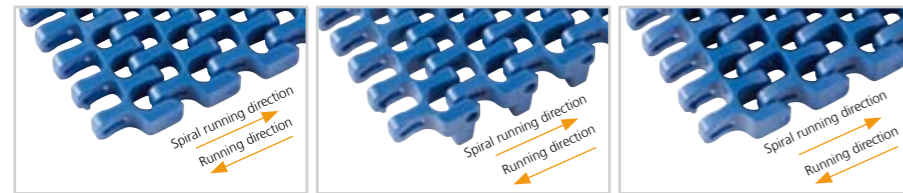
www.unichains.com



Plastic Modular Belt Series uni Flex ASB



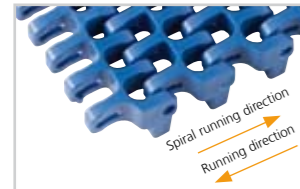
Standard Selection



uni Flex ASB
Surface opening 43%

uni Flex ASB T
Surface opening 43%

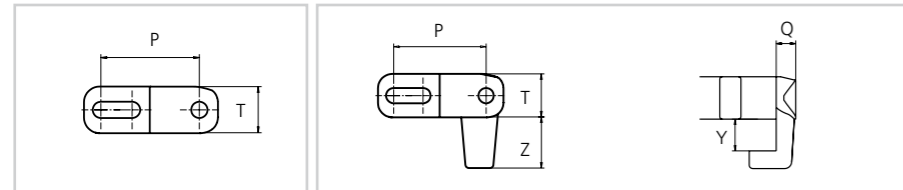
uni Flex ASB CS
Surface opening 43%



uni Flex ASB CS T
Surface opening 43%

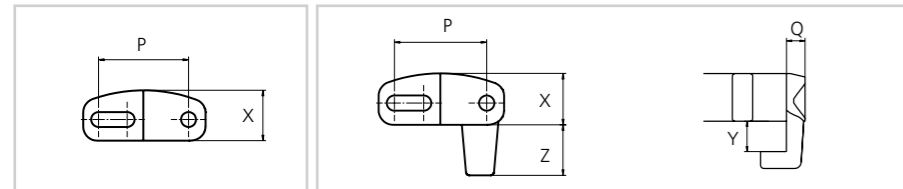
Min. inside radius 2.2 x belt width for all four belt types.

Dimensional Sketches



uni Flex ASB

uni Flex ASB T



uni Flex ASB CS

uni Flex ASB CS T

Belt Weights

uni Flex ASB & uni Flex ASB T | Belt material: POM | Pin material: PA6.6: 8.2 kg/m² (1.68 lb/ft²)
 uni Flex ASB & uni Flex ASB T | Belt material: PP | Pin material: PP: 5.2 kg/m² (1.06 lb/ft²)
 uni Flex ASB CS | CS T | Belt material: POM | Pin material: PA6.6: 8.3 kg/m² (1.70 lb/ft²)

Standard Materials and Colors

Type	Standard materials and colors	Standard pin materials and colors
uni Flex ASB	POM-D W	PA6.6 B
	POM-D B	PA6.6 B
	PP G B W	PA6.6 B
uni Flex ASB T	POM-D B W	PA6.6 B
uni Flex ASB CS	POM-D W	PA6.6 B
	POM-D B	PA6.6 B
uni Flex ASB CS T	POM-D B W	PA6.6 B

- Travel direction**
Side flexing
- Pitch**
25.4 mm (1.00 in.)
- Backflex radius**
25.0 mm (0.98 in.)

Dimensions

	mm	in.
Q	5.5	0.20
P	25.4	1.00
T	12.0	0.47
X	14.2	0.56
Y	9.0	0.35
Z	14.0	0.55

FEATURES

“A proven belt in spiral applications.”

Good release characteristics

>This new generation 1 in. pitch belts is easier to clean and, provides excellent product release.<

Belt: uni Flex ASB



Standard Bricklaid Belt Widths

mm	in.	mm	in.	mm	in.	mm	in.
301	11.9	607	23.9	913	35.9	1219	48.0
378	14.9	684	26.9	990	39.0	1296	51.0
454	17.9	760	29.9	1066	42.0	1372	54.0
531	20.9	837	32.9	1143	45.0	1449	57.0

On above belt width values, the belt width tolerance on standard materials is +0/-0.4% at 23°C/73°F.

Max. Permissible Loads in Curve

uni Flex ASB | T | CS | CS T | Belt width: 12 in. <= W > 18 in. | Belt material: POM | Pin material: PA6.6: 1600 N (360 lbf) or uni Flex ASB | T | CS | CS T | Belt width: 12 in. <= W > 18 in. | Belt material: PP | Pin material: PP: 960 N (216 lbf)

uni Flex ASB | T | CS | CS T | Belt width: W > 18 in. | Belt material: POM | Pin material: PA6.6: 2040 N (459 lbf) or uni Flex ASB | T | CS | CS T | Belt width: W > 18 in. | Belt material: PP | Pin material: PP: 1224 N (275 lbf)

Max. Permissible Loads in Straight Sections

uni Flex ASB | T | CS | CS T | Belt material: POM | Pin material: PA6.6: 18800 N/m (1297 lbf/ft)
 uni Flex ASB | T | CS | CS T | Belt material: PP | Pin material: PP: 12500 N/m (863 lbf/ft)

Standard Sprockets



- No. of teeth:** 7, 9, 12, 15, 18
- Sprocket width:** 30.0 mm (1.18 in.)
- Tooth width:** 7.0 mm (0.28 in.)
- Standard material:** PA6

Other sprocket sizes are available upon request.

Max. Load per Sprocket

uni Flex ASB | T | CS | CST | Belt material: POM: 2000 N (450 lbf) |
 Belt material: PP: 1100 N (247 lbf)

INDUSTRIES

The uni Flex ASB Series improves performance in the following industries and applications:

- Bakery applications including transport, cooling lines, internal transport, metal detectors and packaging lines
- Seafood applications including tray packing lines
- Meat & poultry applications including packaging lines
- Spiral applications as proofing and freezing of croissants, cooling and resting



Belt: uni Flex ASB



Belt: uni Flex ASB

BENEFITS

Operational product benefits:

- Improved strength: 60% higher than other 1 in. pitch belts enabling longer conveyors
- Standard POM-D material containing a self-lubricating component, improving non-stick characteristics and reducing friction
- Easy to clean thanks to improved hygienic design of the hinges